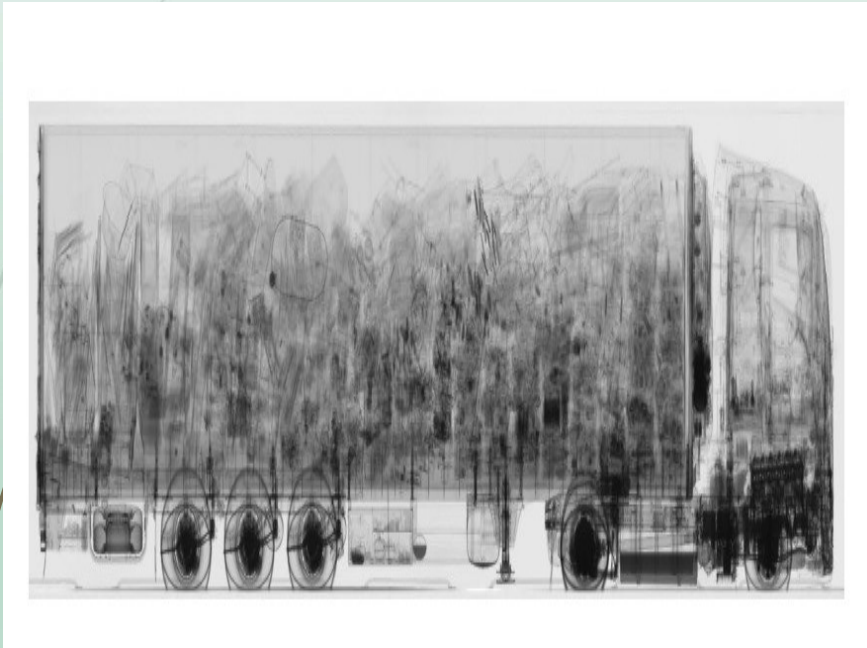




# **INTRODUCTION DOCUMENT MOBILE X RAY SYSTEMS**

# Vehicle, Truck, and Container scanning systems



## ➤ Vehicle, truck, and container scanning systems

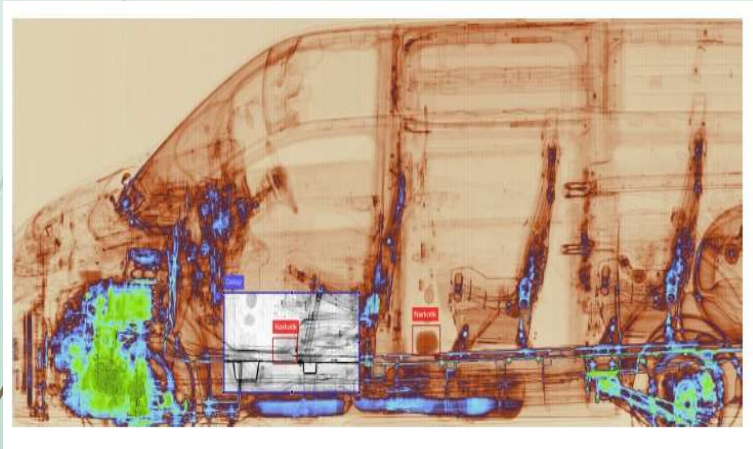
### ➤ Field of Use

- Customs
- Critical Facilities
- Ports, Airports
- Check points on Highways

### ➤ Advantages

- combination fast scanning , screen monitoring and detailed analysis software supported with artificial intelligence
- scans transpassing vehicles, in minutes not hindering flow of traffic
- very low X-Ray exposure (within limitations of sectoral standards).  
backscatter technology X- Ray (not using any kind of radioactive element)

# Types of System



- **Fixed Tunnel System**

The vehicle shall move in the tunnel with a constant speed, i.e. trains

- **Moving System**

The vehicle is steady in the tunnel i.e. trucks, cars, containers

The mobile x-ray equipment will move on rails and scan the vehicle

- **Mobile System**

Very low exposure x-ray device is mounted on pickups or mini trucks and moves fastly at both sides of queue lines of trucks or other vehicles and makes a pre-analysis of vehicles to be scanned further

# Reference Regions and Adjustable Characteristics



- North America
- Europe
- Middle East
- Far East

Hardware and Software  
According to Client's technical specifications  
and tender documents which will conform with  
needs of sector

Threats analysis and technical requests by Client

- **Over 80 Systems Under Operation**

# Operational Photographs



# Motorway Fast Scanning Vehicle Photographs

